

■ Close-up of I-R's T48 Series Barring/Turning motor showing installation arrangement.

# Engine Barring/Turning Motor

**Ingersoll-Rand's T48 Series Motors Applicable to Large Natural Gas and Diesel Engines in the 250-25,500 cu.in. (4-400 liters) Displacement Range**

Ingersoll-Rand has introduced the new T48 Series of Barring/Turning motors to complement its existing line of engine starting systems (ESS). The T48 is well suited for today's engine technicians in providing the power and precise control required for routine and unscheduled engine maintenance, according to I-R engineers.

Based on the proven IR 4800 Series of air motors, the T48 is designed to allow safe turning of large natural gas and diesel engines from 250-25,500 cu.in. (4-400 liters) displacement during maintenance operations. Infinite spotting capability is easily achieved with full flow pendant control. A built-in lockout and engagement prevents accidental starting of the engine during service.

With safety and time saving in mind, the T48 was designed to assist technicians in performing tasks such as timing

adjustment, seating of valves, and coupling alignment. Because the T48 is rigidly mounted to the frame, it avoids potentially dangerous situations that can be encountered with conventional barring methods. Ease of operation frees up technicians for other tasks.

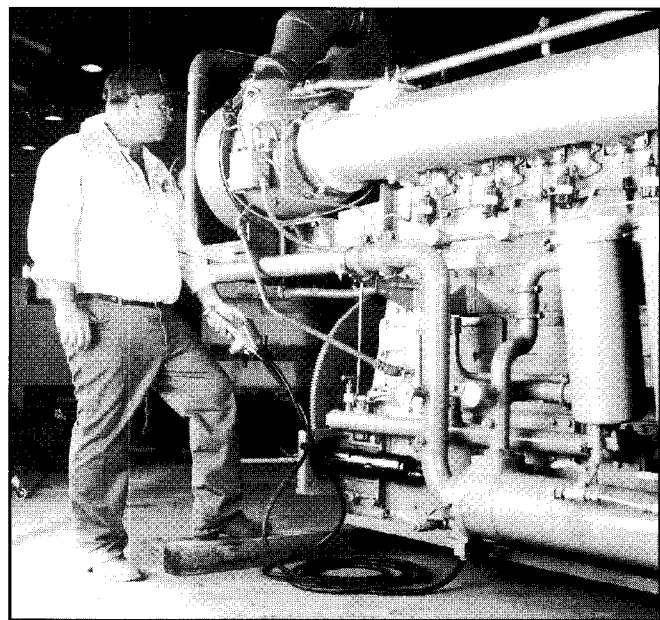
With compressed air operation, it is ideal for field preventive maintenance or complete engine overhauls, where electricity and manpower are short. Air-powered motors are also inherently safe in hazardous environments.

"Ingersoll-Rand recognized a need of its customers to reduce downtime and increase the technician's safety during the servicing of their fleet engines," says Dan Kelleher, marketing manager for Engine Starting Systems. "The T48 Series is the answer to their requests."

Ingersoll-Rand's T48 Series of Barring/Turning motors rep-

resents yet another design that helps Ingersoll-Rand customers simultaneously increase the

productivity and safety of their operations. ■



■ Overall view of installation shows that operation of I-R's T48 Barring/Turning motor is both simple and safe.