

Parts Manual
PL71-31MF-910
04/08/2011

Cleco®

31MF-910 Series
Non-Reversible Rotary Vane Power Motors



For additional product information visit our website at <http://www.apextoolgroup.com>

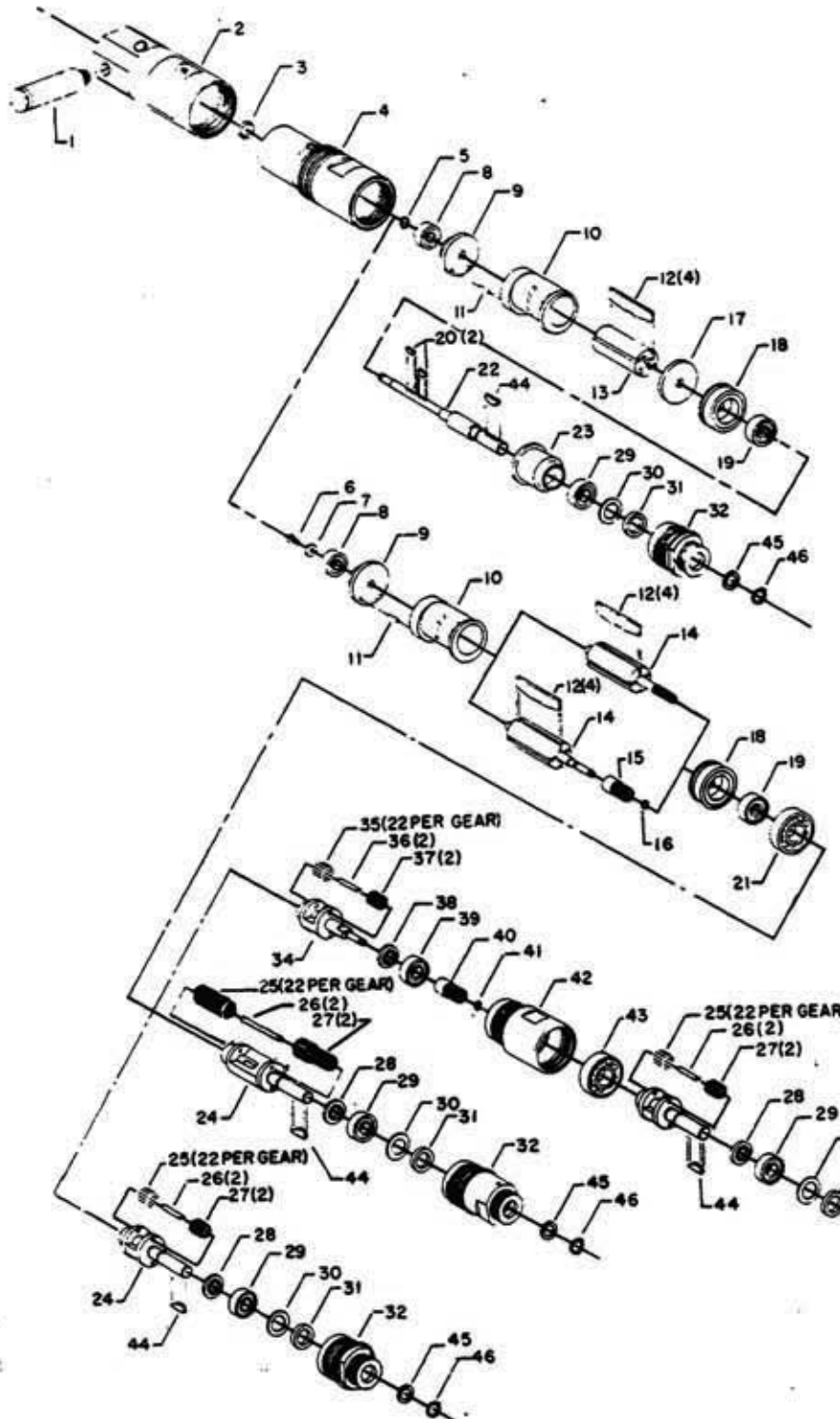


Zampini Industrial Group
AirToolPro.com
1-800-353-4676

Industrial Air & Electric Tools
We Sell Reliability!
In Business Since 1987
FREE Expert Assistance - Call Now

In-Line Motor Units: 31MF-910 Series

Right Hand Rotation, 3/8" Dia. Keyed Shaft



REF. NO.	PART NO.	DESCRIPTION
1	1015069	Ruffler
2	1015496	Rear Head
3	1008680	O-Ring
4	1015495	Motor Housing
5	1012831	Retaining Ring (31MF-910)
6	1011790	Screw (31MF-911,12,13,14,15,16,17)
7	1012518	Washer (31MF-911,12,13,14,15,16,17)
8	1010183	Ball Bearing
9	1012239	Rear Plate
10	1008309	Cylinder, Incl: #11
11	1008265	Pin
12	1008256	(4) Rotor Blade
13	1008537	Rotor (31MF-910)
14	1012811	Rotor (31MF-911,15)
(n)	1024723	Rotor - 9T (31MF-912,16)
	1012812	Rotor - 9T (31MF-913,14,17)
15	1021745	Pinion (31MF-911,15)
16	1007548	Retaining Ring (31MF-911,15)
17	1012269	Wear Plate (31MF-910)
18	1008260	Front Plate
19	1010770	Ball Bearing
20	1008595	(2) Woodruff Key (31MF-910)
21	1008262	Ball Bearing (31MF-911,12,13,14,15,16,17)
22	1015656	Spindle (31MF-910)
23	1012788	Spacer (31MF-910)
24	1015633	Planet Cage (31MF-911,15,16,17)
	1015632	Planet Cage (31MF-912)
	1015631	Planet Cage (31MF-913)
	1015634	Planet Cage (31MF-914)
25	1004984	(22) Planet Roller (31MF-911,12,13,15,16,17)
	1005024	(22) Planet Roller (31MF-914)
26	1004983	(2) Planet Pin (31MF-911,12,13,15,16,17)
	1005010	(2) Planet Pin (31MF-914)
27	1008250	(2) Planet Gear - 10T (31MF-911,15,16,17)
	1008252	(2) Planet Gear - 19T (31MF-912)
	1008241	(2) Planet Gear - 21T (31MF-913)
	1008952	(2) Planet Gear (31MF-914)
(n)	1017051	Planet Cage Washer (31MF-911,15,16,17)
(n)	1017053	Planet Cage Washer (31MF-912)
(n)	1017052	Planet Cage Washer (31MF-913,14)
29	1005062	Ball Bearing
30	1005051	Steel Washer
31	1005044	Felt Washer
32	1008961	Nose & Internal Gear (31MF-911,15,16,17)
	1008960	Nose & Internal Gear (31MF-912,13)
	1008963	Nose & Internal Gear (31MF-914)
	1012152	Nose (31MF-910)
34	1008319	Planet Cage (31MF-915)
	1008318	Planet Cage (31MF-916)
	1008317	Planet Cage (31MF-917)
35	1004984	(22) Planet Roller (31MF-915,16,17)
36	1004983	(2) Planet Pin (31MF-915,16,17)
37	1008250	Planet Gear - 10T (31MF-915)
	1008252	Planet Gear - 19T (31MF-916)
	1008241	Planet Gear - 21T (31MF-917)
(n)	1017051	Planet Cage Washer (31MF-915)
(n)	1017053	Planet Cage Washer (31MF-916)
(n)	1017052	Planet Cage Washer (31MF-917)
39	1005062	Ball Bearing (31MF-915,16,17)
40	1021745	Pinion (31MF-915,16,17)
41	1007548	Retaining Ring (31MF-915,16,17)
42	1008955	Gear Housing (31MF-915)
	1008956	Gear Housing (31MF-916,17)
43	1008262	Ball Bearing (31MF-915,16,17)
44	1001473	Woodruff Key
45	1015753	Shield
46	1012001	Retaining Ring
(n)	NEW PART	



Zampini Industrial Group
AirToolPro.com
1-800-353-4676

Industrial Air & Electric Tools
 We Sell Reliability!
 In Business Since 1987
 FREE Expert Assistance - Call Now

SERVICE NOTES

<u>MODEL NO.</u>	<u>TOOL SPEED</u> (RPM)	<u>OUTPUT SPINDLE</u>
31MFN910M	20,000	3/8" Diameter Keyed
31MFN911M	5,000	" " "
31MFN912M	3,000	" " "
31MFN913M	1,850	" " "
31MFN914M	1,400	" " "
31MFN915M	1,100	" " "
31MFN916M	750	" " "
31MFN917M	400	" " "

FEATURES

1"-20 L.H. Nose Thread
R.H. Rotation

POWER SOURCE

Requirement: 90-100 PSI Air Pressure, Minimum 1/4" I.D. Hose
Air Inlet Thread Size: 1/4" NPT



Zampini Industrial Group

AirToolPro.com

1-800-353-4676

Industrial Air & Electric Tools

We Sell Reliability!

In Business Since 1987

FREE Expert Assistance - Call Now

Sales & Service Centers

Note: All locations may not service all products. Please contact the nearest Sales & Service Center for the appropriate facility to handle your service requirements.

Dallas, TX
**Apex Tool Group
Sales & Service Center**
1470 Post & Paddock
Grand Prairie, TX 75050
Tel: 972-641-9563
Fax: 972-641-9674

Detroit, MI
**Apex Tool Group
Sales & Service Center**
2630 Superior Court
Auburn Hills, MI 48326
Tel: 248-391-3700
Fax: 248-391-7824

Houston, TX
**Apex Tool Group
Sales & Service Center**
6550 West Sam Houston
Parkway North, Suite 200
Houston, TX 77041
Tel: 713-849-2364
Fax: 713-849-2047

Lexington, SC
Apex Tool Group
670 Industrial Drive
Lexington, SC 29072
Tel: 800-845-5629
Tel: 803-951-7544
Fax: 803-358-7681

Los Angeles, CA
**Apex Tool Group
Sales & Service Center**
15503 Blackburn Avenue
Norwalk, CA 90650
Tel: 562-623-4457
Fax: 562-802-1718

Seattle, WA
**Apex Tool Group
Sales & Service Center**
2865 152nd Avenue N.E.
Redmond, WA 98052
Tel: 425-497-0476
Fax: 425-497-0496

York, PA
**Apex Tool Group
Sales & Service Center**
3990 East Market Street
York, PA 17402
Tel: 717-755-2933
Fax: 717-757-5063

Canada
**Apex Tool Group
Sales & Service Center**
5925 McLaughlin Road
Mississauga, Ont. L5R 1B8
Canada
Tel: 905-501-4785
Fax: 905-501-4786

Germany
Cooper Power Tools
GmbH & Co. OHG
a company of
Apex Tool Group, LLC
Industriestraße 1
73463 Westhausen
Germany
Tel: +49 (0) 73 63 81 0
Fax: +49 (0) 73 63 81 222

England
Cooper Power Tools
GmbH & Co. OHG
a company of
Apex Tool Group, LLC
C/O Spline Gauges
Piccadilly, Tamworth
Staffordshire B78 2ER
United Kingdom
Tel: +44 1827 8741 28
Fax: +44 1827 8741 28

France
Cooper Power Tools SAS
a company of
Apex Tool Group, LLC
25 rue Maurice Chevalier
77330 Ozoir-La-Ferrière
France
Tel: +33 1 6443 2200
Fax: +33 1 6443 1717

China
Cooper (China) Co., Ltd.
a company of
Apex Tool Group, LLC
955 Sheng Li Road,
Heqing Pudong, Shanghai
China 201201
Tel: +86-21-28994176
Fax: +86-21-51118446

Mexico
Cooper Tools
de México S.A. de C.V.
a company of
Apex Tool Group, LLC
Vialidad El Pueblito #103
Parque Industrial Querétaro
Querétaro, QRO 76220
Mexico
Tel: +52 (442) 211-3800
Fax: +52 (442) 103-0443

Brazil
Cooper Tools Industrial Ltda.
a company of
Apex Tool Group, LLC
Av. Liberdade, 4055
Zona Industrial - Iporanga
SP Brazil
Tel: +55 15 2383929
Fax: +55 15 2383260

Hungary
Cooper Tools Hungaria Kft.
a company of
Apex Tool Group, LLC
Berkenyefa sor 7
Pf: 640
9027 Győr
Hungary
Tel: +36 96 66 1383
Fax: +36 96 66 1135

Apex Tool Group, LLC
1000 Lufkin Road
Apex, NC 27539
Phone: 919-387-0099
Fax: 919-387-2614
www.apextoolgroup.com

Cleco®