

Parts Manual  
PL71-31MF-900  
04/08/2011

# Cleco®

**31MF-900 Series**  
Non-Reversible Rotary Vane Power Motors



For additional product information visit our website at <http://www.apextoolgroup.com>



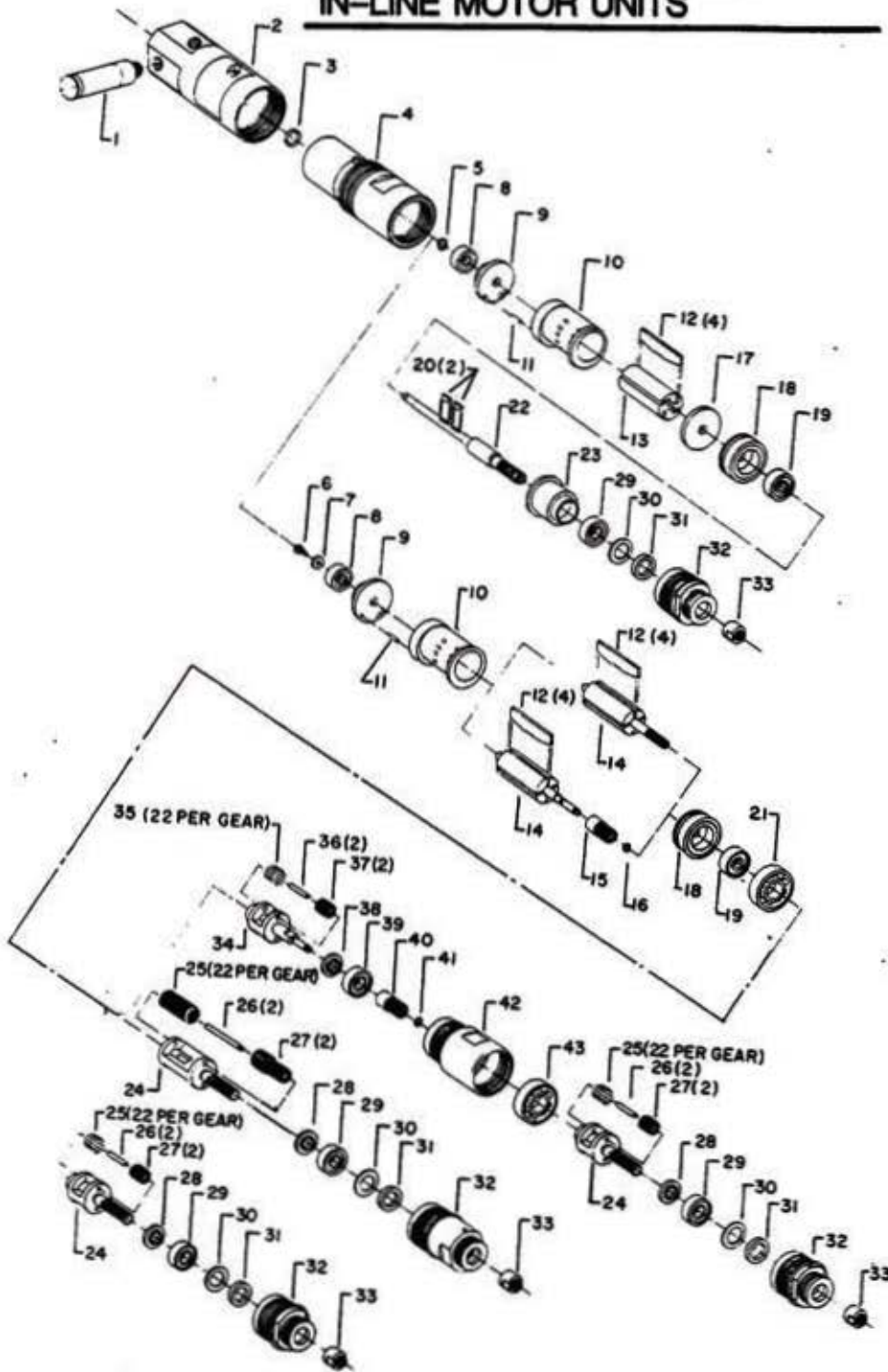
**Zampini Industrial Group**  
**AirToolPro.com**  
**1-800-353-4676**

Industrial Air & Electric Tools  
We Sell Reliability!  
In Business Since 1987  
FREE Expert Assistance - Call Now

# Cleco®

## Models: 31MF-900A series IN-LINE MOTOR UNITS

31MFN900M  
31MFN901M  
31MFN902M  
31MFN903M  
31MFN904M  
31MFN905M  
31MFN906M  
31MFN907M



REF. NO.	PART NO.	DESCRIPTION
1	1015869	Muffer
2	1015496	Rear Head
3	1008680	O-Ring
4	1015495	Motor Housing
5	1012831	Retaining Ring (31MF-900)
6	1011750	Screw (31MF-901,02,03,04,05,06,07)
7	1012518	Washer (31MF-901,02,03,04,05,06,07)
8	1010183	Ball Bearing
9	1012239	Rear Plate
10	1008309	Cylinder, Incl: #11
11	1008265	Pin
12	1008256	(4) Rotor Blade
13	1008537	Rotor (31MF-900)
14	1012811	Rotor (31MF-901,05)
(n)	1024723	Rotor - 9T (31MF-902,06)
	1012812	Rotor - 5T (31MF-903,04,07)
15	1021745	Pinion (31MF-901,05)
16	1007548	Retaining Ring (31MF-901,05)
17	1012269	Wear Plate (3MF-900)
18	1008260	Front Plate
19	1010770	Ball Bearing
20	1008595	Woodruff Key (31MF-900)
21	1008262	Ball Bearing (31MF-901,02,03,04,05,06,07)
22	1012827	Spindle (31MF-900)
23	1012788	Spacer (31MF-900)
24	1008235	Planet Cage (31MF-901,05,06,07)
	1008236	Planet Cage (31MF-902)
	1008239	Planet Cage (31MF-903)
	1008953	Planet Cage (31MF-904)
25	1004984	(22) Planet Roller (31MF-901,02,03,05,06,07)
	1005024	(22) Planet Roller (31MF-904)
26	1004983	(2) Planet Pin (31MF-901,02,03,05,06,07)
	1005010	(2) Planet Pin (31MF-904)
27	1008250	Planet Gear - 16T (31MF-901,05,06,07)
	1008252	Planet Gear - 19T (31MF-902)
	1008241	Planet Gear - 21T (31MF-903)
	1008952	Planet Gear (31MF-904)
(n)	1017051	Planet Cage Washer (31MF-901,05,06,07)
(n)	1017053	Planet Cage Washer (31MF-902)
(n)	1017052	Planet Cage Washer (31MF-903,04)
29	1005062	Ball Bearing
30	1005051	Steel Washer
31	1005044	Felt Washer
32	1008961	Hose & Internal Gear (31MF-901,05,06,07)
	1008960	Hose & Internal Gear (31MF-902,03)
	1008963	Hose & Internal Gear (31MF-904)
	1012152	Hose (31MF-900)
33	1005071	Spindle Nut
34	1008319	Planet Cage (31MF-905)
	1008318	Planet Cage (31MF-906)
	1008317	Planet Cage (31MF-907)
35	1004984	(22) Planet Roller (31MF-905,06,07)
36	1004983	(2) Planet Pin (31MF-905,06,07)
37	1008250	Planet Gear - 16T (31MF-905)
	1008252	Planet Gear - 19T (31MF-906)
	1008241	Planet Gear - 21T (31MF-907)
(n)	1017051	Planet Cage Washer (31MF-905)
(n)	1017053	Planet Cage Washer (31MF-906)
(n)	1017052	Planet Cage Washer (31MF-907)
39	1005062	Ball Bearing (31MF-905,06,07)
40	1021745	Pinion (31MF-905,06,07)
41	1007548	Retaining Ring (31MF-905,06,07)
42	1008955	Gear Housing (31MF-905)
	1008956	Gear Housing (31MF-906,07)
43	1008262	Ball Bearing (31MF-905,06,07)
(n)	NEW PART	



Zampini Industrial Group

AirToolPro.com

1-800-353-4676

Industrial Air & Electric Tools

We Sell Reliability!

In Business Since 1987

FREE Expert Assistance - Call Now

# SERVICE NOTES

<u>MODEL NO.</u>	<u>TOOL SPEED</u> (RPM)	<u>OUTPUT SPINDLE</u>
31MFN900M	20,000	3/8" -24 R.H. Thd.
31MFN901M	5,000	" " " "
31MFN902M	3,000	" " " "
31MFN903M	1,850	" " " "
31MFN904M	1,400	" " " "
31MFN905M	1,100	" " " "
31MFN906M	750	" " " "
31MFN907M	450	" " " "

## FEATURES

1" -20 L.H. Nose Thread  
R.H. Rotation

## POWER SOURCE

Requirements: 90-100 PSI Air Pressure, Minimum 1/4" I.D. Hose  
Air Inlet Thread Size: 1/4" NPT



**Zampini Industrial Group**

**AirToolPro.com**

**1-800-353-4676**

Industrial Air & Electric Tools

We Sell Reliability!

In Business Since 1987

FREE Expert Assistance - Call Now

## Sales & Service Centers

**Note:** All locations may not service all products. Please contact the nearest Sales & Service Center for the appropriate facility to handle your service requirements.

Dallas, TX  
**Apex Tool Group  
Sales & Service Center**  
1470 Post & Paddock  
Grand Prairie, TX 75050  
Tel: 972-641-9563  
Fax: 972-641-9674

Detroit, MI  
**Apex Tool Group  
Sales & Service Center**  
2630 Superior Court  
Auburn Hills, MI 48326  
Tel: 248-391-3700  
Fax: 248-391-7824

Houston, TX  
**Apex Tool Group  
Sales & Service Center**  
6550 West Sam Houston  
Parkway North, Suite 200  
Houston, TX 77041  
Tel: 713-849-2364  
Fax: 713-849-2047

Lexington, SC  
**Apex Tool Group**  
670 Industrial Drive  
Lexington, SC 29072  
Tel: 800-845-5629  
Tel: 803-951-7544  
Fax: 803-358-7681

Los Angeles, CA  
**Apex Tool Group  
Sales & Service Center**  
15503 Blackburn Avenue  
Norwalk, CA 90650  
Tel: 562-623-4457  
Fax: 562-802-1718

Seattle, WA  
**Apex Tool Group  
Sales & Service Center**  
2865 152nd Avenue N.E.  
Redmond, WA 98052  
Tel: 425-497-0476  
Fax: 425-497-0496

York, PA  
**Apex Tool Group  
Sales & Service Center**  
3990 East Market Street  
York, PA 17402  
Tel: 717-755-2933  
Fax: 717-757-5063

Canada  
**Apex Tool Group  
Sales & Service Center**  
5925 McLaughlin Road  
Mississauga, Ont. L5R 1B8  
Canada  
Tel: 905-501-4785  
Fax: 905-501-4786

Germany  
Cooper Power Tools  
GmbH & Co. OHG  
a company of  
Apex Tool Group, LLC  
Industriestraße 1  
73463 Westhausen  
Germany  
Tel: +49 (0) 73 63 81 0  
Fax: +49 (0) 73 63 81 222

England  
Cooper Power Tools  
GmbH & Co. OHG  
a company of  
Apex Tool Group, LLC  
C/O Spline Gauges  
Piccadilly, Tamworth  
Staffordshire B78 2ER  
United Kingdom  
Tel: +44 1827 8741 28  
Fax: +44 1827 8741 28

France  
Cooper Power Tools SAS  
a company of  
Apex Tool Group, LLC  
25 rue Maurice Chevalier  
77330 Ozoir-La-Ferrière  
France  
Tel: +33 1 6443 2200  
Fax: +33 1 6443 1717

China  
Cooper (China) Co., Ltd.  
a company of  
Apex Tool Group, LLC  
955 Sheng Li Road,  
Heqing Pudong, Shanghai  
China 201201  
Tel: +86-21-28994176  
Fax: +86-21-51118446

Mexico  
Cooper Tools  
de México S.A. de C.V.  
a company of  
Apex Tool Group, LLC  
Vialidad El Pueblito #103  
Parque Industrial Querétaro  
Querétaro, QRO 76220  
Mexico  
Tel: +52 (442) 211-3800  
Fax: +52 (442) 103-0443

Brazil  
Cooper Tools Industrial Ltda.  
a company of  
Apex Tool Group, LLC  
Av. Liberdade, 4055  
Zona Industrial - Iporanga  
SP Brazil  
Tel: +55 15 2383929  
Fax: +55 15 2383260

Hungary  
Cooper Tools Hungaria Kft.  
a company of  
Apex Tool Group, LLC  
Berkenyefa sor 7  
Pf: 640  
9027 Györ  
Hungary  
Tel: +36 96 66 1383  
Fax: +36 96 66 1135

Apex Tool Group, LLC  
1000 Lufkin Road  
Apex, NC 27539  
Phone: 919-387-0099  
Fax: 919-387-2614  
www.apextoolgroup.com

# Cleco®