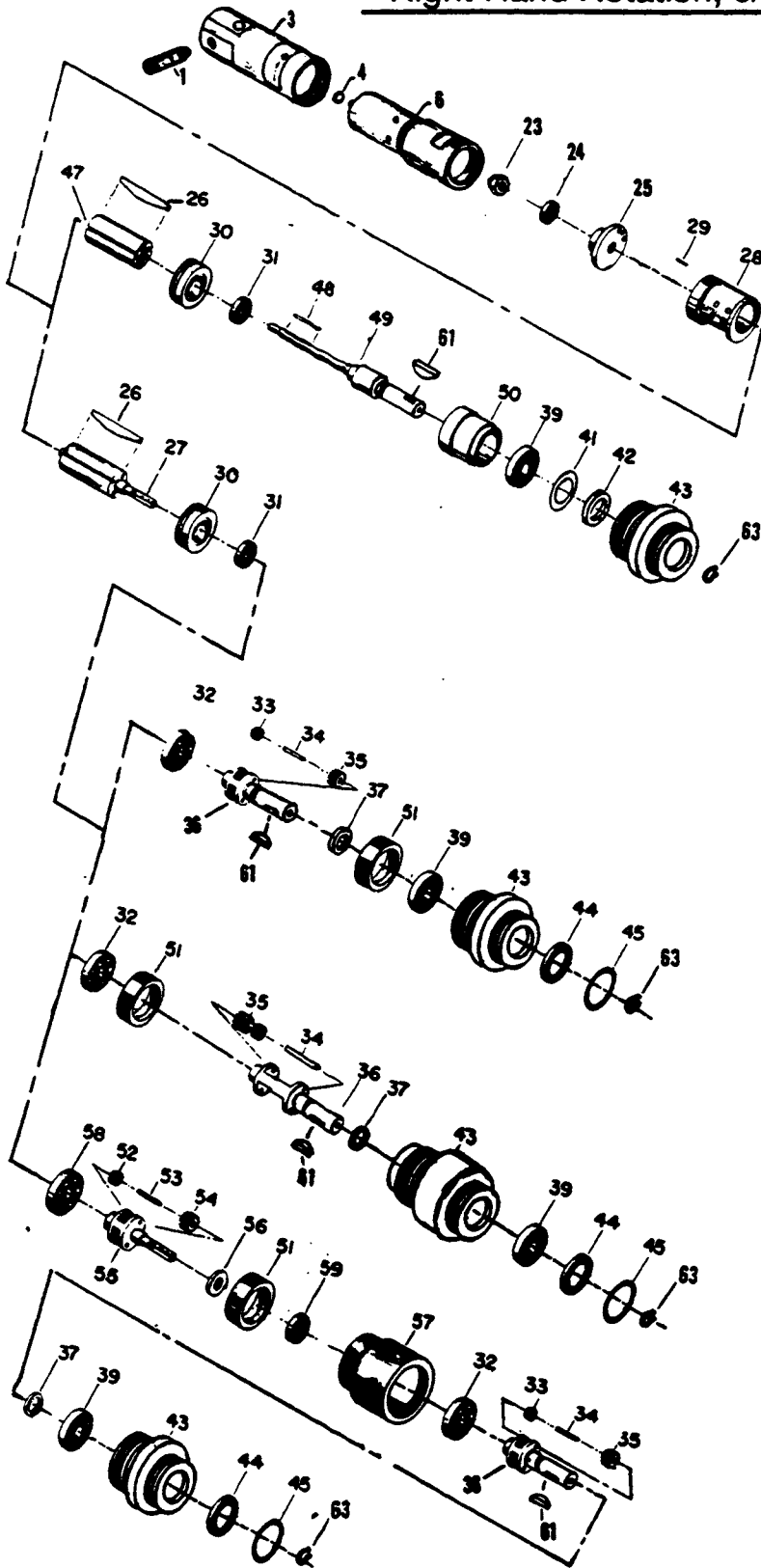


Cleco®

In-Line Motor Units: 21MF-910 Series Right Hand Rotation, 3/8" Dia. Keyed Shaft

21MFN910M
21MFN911M
21MFN912M
21MFN913M
21MFN914M
21MFN915M
21MFN916M
21MFN917M



REF. NO.	PART NO.	DESCRIPTION
1	1015869	Muffler
3	1015624	Rear Head
4	1008680	O-Ring
6	1015648	Motor Housing
23	1012215	Nut
24	1009879	Ball Bearing
25	1008902	Rear Plate
26	1008914	(5) Rotor Blade (21MF-910)
	1008914	(4) Rotor Blade (All Others)
27	1015872	Rotor-9T (21MF-911,15)
	1017518	Rotor-7T (21MF-912,16)
	1017517	Rotor-6T (21MF-913,17)
	1017516	Rotor-5T (21MF-914)
28	1017579	Cylinder (incl: Ref. #29)
29	1008265	Pin
30	1008916	Front Plate
31	1007537	Ball Bearing
32	1005062	Ball Bearing (21MF-911,12,13,14,15,16,17)
33	1008924	(24) Needle Roller (21MF-911,12,13,15,16,17)
34	1008920	(2) Planet Pin (21MF-911,12,13,15,16,17)
	1008977	(2) Planet Pin (21MF-914)
35	1008973	(2) Planet Gear-14T (21MF-911,15,16,17)
	1008968	(2) Planet Gear-17T (21MF-912)
	1008919	(2) Planet Gear-19T (21MF-913)
	1008978	(2) Planet Gear (21MF-914)
36	1015488	Planet Cage (21MF-911,15,16,17)
	1015486	Planet Cage (21MF-912)
	1005487	Planet Cage (21MF-913)
	1015489	Planet Cage (21MF-914)
37	1008972	Planet Cage Washer (21MF-911,15,16,17)
	1008964	Planet Cage Washer (21MF-912,14)
	1008918	Planet Cage Washer (21MF-913)
39	1005062	Ball Bearing (21MF-910)
	1009087	Ball Bearing (21MF-911,12,13,14,15,16,17)
41	1005051	Steel Washer (21MF-910)
42	1005044	Felt Washer (21MF-910)
43	1009079	Nose (21MF-910)
	1019149	Nose & Internal Gear (21MF-911,15,16,17)
	1019156	Nose & Internal Gear (21MF-912)
	1019154	Nose & Internal Gear (21MF-913)
	1019151	Nose & Internal Gear (21MF-914)
44	1019157	Washer (21MF-911,12,13,14,15,16,17)
45	1008859	Retaining Ring (21MF-911,12,13,14,15,16,17)
47	1008981	Rotor (21MF-910)
48	1008983	Pin (21MF-910)
49	1015657	Work Spindle (21MF-910)
50	1008984	Spacer (21MF-910)
51	1008921	Bearing Adapter (21MF-913,14,17)
52	1008924	(24) Planet Roller (21MF-915,16,17)
53	1008920	(2) Planet Pin (21MF-915,16,17)
54	1008973	(2) Planet Gear-14T (21MF-915)
	1008968	(2) Planet Gear-17T (21MF-916)
	1008919	(2) Planet Gear-19T (21MF-917)
55	1008985	Planet Cage (21MF-915)
	1009679	Planet Cage (21MF-916)
	1009681	Planet Cage (21MF-917)
56	1008986	Planet Cage Washer (21MF-915)
	1009680	Planet Cage Washer (21MF-916)
	1009682	Planet Cage Washer (21MF-917)
57	1019146	Gear Housing (21MF-915)
	1019147	Gear Housing (21MF-916)
	1019148	Gear Housing (21MF-917)
58	1005062	Ball Bearing (21MF-915,16,17)
59	1007537	Ball Bearing (21MF-915,16,17)
61	1001473	Woodruff Key
63	1012001	Retaining Ring



Zampini Industrial Group
AirToolPro.com
1-800-353-4676

Industrial Air & Electric Tools
We Sell Reliability!
In Business Since 1987
FREE Expert Assistance - Call Now

SERVICE NOTES

<u>MODEL NO.</u>	<u>FREE SPEED (RPM)</u>	<u>OUTPUT SPINDLE</u>
21MFN910M	24,000	3/8" Dia. Keyed
21MFN911M	4,750	3/8" Dia. Keyed
21MFN912M	3,500	3/8" Dia. Keyed
21MFN913M	2,800	3/8" Dia. Keyed
21MFN914M	2,100	3/8" Dia. Keyed
21MFN915M	900	3/8" Dia. Keyed
21MFN916M	650	3/8" Dia. Keyed
21MFN917M	500	3/8" Dia. Keyed

FEATURES

1" - 20 Left Hand Threaded Nose
Right Hand Spindle Rotation

POWER SOURCE

Requirements: 90 - 100 PSI Air Pressure, 1/4" I.D. Hose
Air Inlet Thread Size: 1/4" NPT

Apex Tool Group, LLC.
1000 Lufkin Road
Apex, NC 27539
Phone: 919-387-0099
Fax: 919-387-2614
www.clecotools.com

Cleco®

Printed in USA 06/15/2010/PL71-21MF-910/Copyright© 2010 Apex Tool Group, LLC.



Zampini Industrial Group
AirToolPro.com
1-800-353-4676

Industrial Air & Electric Tools
We Sell Reliability!
In Business Since 1987
FREE Expert Assistance - Call Now