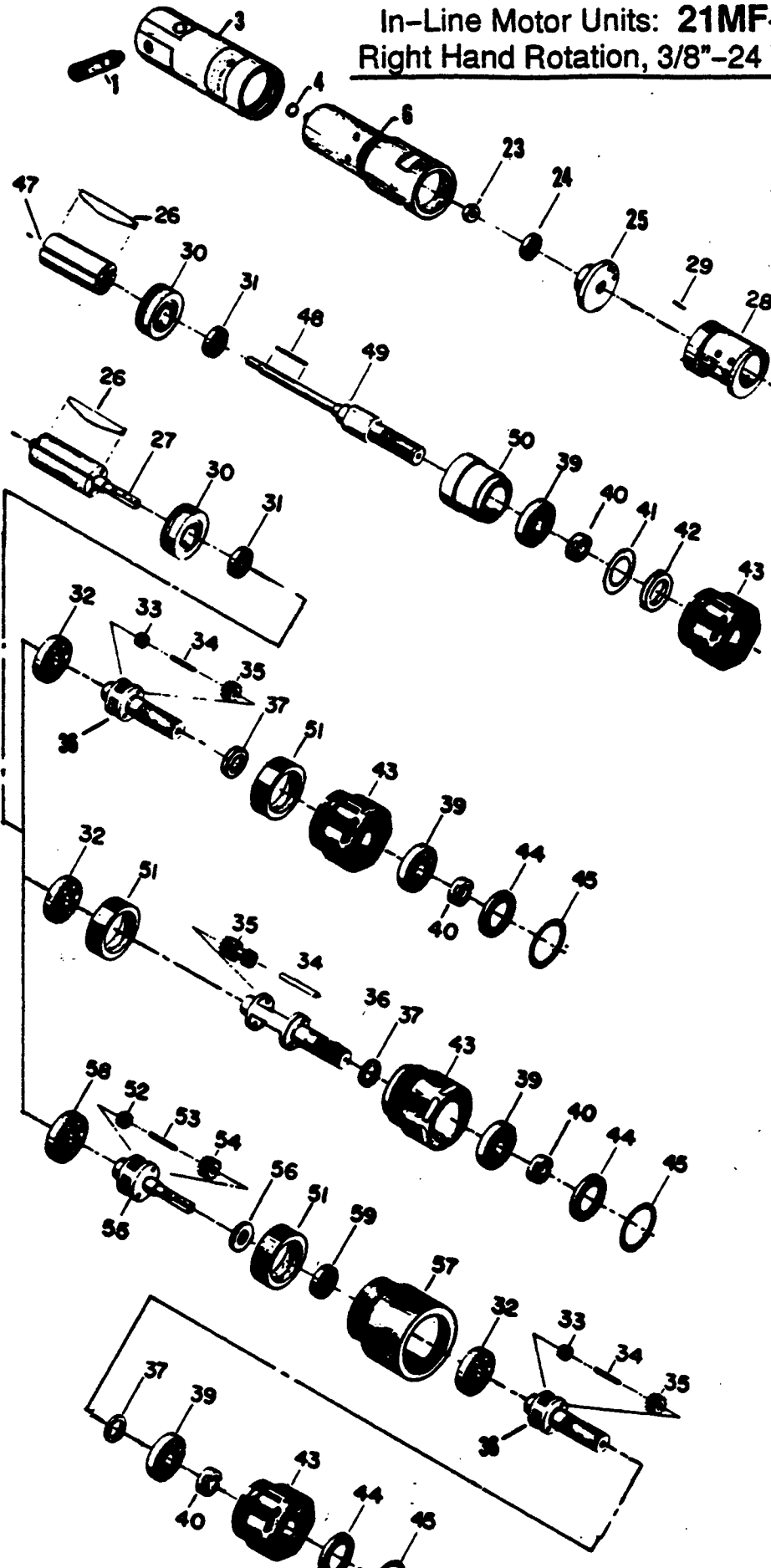


Cleco®

In-Line Motor Units: 21MF-900 Series
Right Hand Rotation, 3/8"-24 Threaded Shaft

- 21MFN900M
- 21MFN901M
- 21MFN902M
- 21MFN903M
- 21MFN904M
- 21MFN905M
- 21MFN906M
- 21MFN907M



REF. NO.	PART NO.	DESCRIPTION
1	1015869	Muffler
3	1015624	Rear Head
4	1008680	O-Ring
6	1015648	Motor Housing
23	1012215	Nut
24	1009879	Ball Bearing
25	1017780	Rear Plate
26	1008914	(5) Rotor Blade (21MF-900)
27	1008914	(4) Rotor Blade (All Others)
27	1015872	Rotor-9T (21MF-901,5)
27	1017518	Rotor-7T (21MF-902,6)
27	1017517	Rotor-6T (21MF-903,7)
27	1017516	Rotor-5T (21MF-904)
28	1017579	Cylinder (Incl: REZ. #29)
29	1008265	Pin
30	1008916	Front Plate
31	1007537	Ball Bearing
32	1005062	Ball Bearing (21MF-901,2,3,4,5,6,7)
33	1008924	(24) Needle Roller (21MF-901,2,3,4,5,6,7)
34	1008920	(2) Planet Pin (21MF-901,2,3,5,6,7)
34	1008977	(2) Planet Pin (21MF-904)
35	1008973	(2) Planet Gear-14T (21MF-901,5,6,7)
35	1008968	(2) Planet Gear-17T (21MF-902)
35	1008919	(2) Planet Gear-19T (21MF-903)
35	1008978	(2) Planet Gear (21MF-904)
36	1008974	Planet Cage (21MF-901,5,6,7)
36	1008969	Planet Cage (21MF-902)
36	1008917	Planet Cage (21MF-903)
36	1008979	Planet Cage (21MF-904)
37	1008972	Planet Cage Washer (21MF-901,5,6,7)
37	1008964	Planet Cage Washer (21MF-902,4)
37	1008918	Planet Cage Washer (21MF-903)
39	1005062	Ball Bearing (21MF-900)
39	1009087	Ball Bearing (21MF-901,2,3,4,5,6,7)
40	1005071	Spindle Nut
41	1005051	Steel Washer (21MF-900)
42	1005044	Felt Washer (21MF-900)
43	1009079	Hose (21MF-900)
43	1019149	Hose & Internal Gear (21MF-901,5,6,7)
43	1019156	Hose & Internal Gear (21MF-902)
43	1019154	Hose & Internal Gear (21MF-903)
43	1019151	Hose & Internal Gear (21MF-904)
44	1019157	Washer (21MF-901,2,3,4,5,6,7)
45	1008859	Retaining Ring (21MF-901,2,3,4,5,6,7)
47	1008981	Rotor (21MF-900)
48	1008983	Pin (21MF-900)
49	1008982	Work Spindle (21MF-900)
50	1008984	Spacer (21MF-900)
51	1008921	Bearing Adapter (21MF-903,4,7)
52	1008924	(24) Planet Roller (21MF-905,6,7)
53	1008920	(2) Planet Pin (21MF-905,6,7)
54	1008973	(2) Planet Gear-14T (21MF-905)
54	1008968	(2) Planet Gear-17T (21MF-906)
54	1008919	(2) Planet Gear-19T (21MF-907)
55	1008985	Planet Cage (21MF-905)
55	1009679	Planet Cage (21MF-906)
55	1009681	Planet Cage (21MF-907)
56	1008986	Planet Cage Washer (21MF-905)
56	1009680	Planet Cage Washer (21MF-906)
56	1009682	Planet Cage Washer (21MF-907)
57	1019146	Gear Housing (21MF-905)
57	1019147	Gear Housing (21MF-906)
57	1019148	Gear Housing (21MF-907)
58	1005062	Ball Bearing (21MF-905,6,7)
59	1007537	Ball Bearing (21MF-905,6,7)



Zampini Industrial Group
AirToolPro.com
1-800-353-4676

Industrial Air & Electric Tools
We Sell Reliability!
In Business Since 1987
FREE Expert Assistance - Call Now

SERVICE NOTES

<u>MODEL NO.</u>	<u>FREE SPEED</u> (RPM)	<u>OUTPUT SPINDLE</u>
21MFN900M	24,000	3/8" - 24 R.H.
21MFN901M	4,750	3/8" - 24 R.H.
21MFN902M	3,500	3/8" - 24 R.H.
21MFN903M	2,800	3/8" - 24 R.H.
21MFN904M	2,100	3/8" - 24 R.H.
21MFN905M	900	3/8" - 24 R.H.
21MFN906M	650	3/8" - 24 R.H.
21MFN907M	500	3/8" - 24 R.H.

FEATURES

Right Hand Spindle Rotation
1" - 20 Left Hand Threaded Nose

POWER SOURCE

Requirements: 90 - 100 PSI Air Pressure, 1/4" I.D. Hose
Air Inlet Thread Size: 1/4" NPT

Apex Tool Group, LLC.
1000 Lufkin Road
Apex, NC 27539
Phone: 919-387-0099
Fax: 919-387-2614
www.clecotools.com

Cleco®

Printed in USA 06/15/2010/PL71-21MF-900/Copyright© 2010 Apex Tool Group, LLC.



Zampini Industrial Group
AirToolPro.com
1-800-353-4676

Industrial Air & Electric Tools
We Sell Reliability!
In Business Since 1987
FREE Expert Assistance - Call Now