

Parts Manual
PL12-1094EN
06/25/2015

Cleco®

C3R-2249

C3R Motor Assembly with 1/2" Square Drive Output

For additional product information visit our website at <http://www.apextoolgroup.com>



Zampini Industrial Group

AirToolPro.com

1-800-353-4676

Industrial Air & Electric Tools

We Sell Reliability!

In Business Since 1987

FREE Expert Assistance - Call Now



Zampini Industrial Group
AirToolPro.com
1-800-353-4676

Industrial Air & Electric Tools
We Sell Reliability!
In Business Since 1987
FREE Expert Assistance - Call Now

Description and Instructions

The original language of this manual is English.

Product Safety Information:

Intended Use:

This pneumatic motor assembly is to be used as a power source and integrated into other equipment.

For additional product safety information refer to Apex Tool Group, LLC or Apex Tool Group GmbH & Co. OHG document CE-2005, General Safety Pneumatic Air Motors.



This motor must not be modified in any manner unless approved in writing by Apex Tool Group, LLC or Apex Tool Group GmbH & Co. OHG. All safety devices must be properly installed and maintained in good working order.

Declaration of Incorporation:

We affirm that this machine complies with the basic requirements of the following directives (2006/42/EC) and is intended for installation / assembly in a / with other machine(s). Commissioning of the incomplete machine is prohibited until such time that the incomplete machine has been incorporated in a machine that complies with the EC Machinery Directive 2006/42/EC and for which there is an EC Declaration of Conformity in accordance with Appendix II A. We furthermore declare that the special technical documentation for the incomplete machine is in accordance with Appendix VII Part B. We undertake to have it passed on to the market surveillance body upon request by our representative for the compilation of technical documentation. The following Sections of Appendix I of Directive 2006/42/EC have been fulfilled: 1.1.2, 1.1.3, 1.1.5, 1.3.2, 1.3.4, 1.5. Applied harmonized standards are ISO 12100-1: 2004-04, ISO 12100-2:2004-04.

The name, job function and address of the person authorized to compile the technical file

Mr. Vishnu Irigreddy
 Director of Global R&D- Mechanical Engineering
 Apex Tool Group
 670 Industrial Drive
 Lexington, SC 29072

Signature: Vishnu Irigreddy
 Date: 06/25/2015

Air Line Lubrication:

Part No.	Packaged	Designation
540397	1 Quart (0.94 liter)	Airlube 10W/NR-420LB DR
533485	1 US Gallon (3.78 liter)	Airlube 10W/NR-420LB DR

Use Apex Tool Group, LLC or Apex Tool Group GmbH & Co. OHG's lightweight air tool oil 500021 (available in quantities shown in the following chart) or an SAE-5 lightweight spindle oil.

Grease:

Part No.	Packaged	Designation
540450	18 oz. (0.51 kg)	Black Pearl EP-NLGI-0
540395	2 oz. (0.06 kg)	Magnalube-G
513156	16 oz. (0.45 kg)	Magnalube-G
541444	2 oz. (0.06 kg)	Rheolube 363AX-1
541445	16 oz. (0.45 kg)	Rheolube 363AX-1

Air Supply Line:

Parameter	Description
Air Hose	Minimum inside diameter: 3/8" (9.5mm) Maximum length: 8.0' (2.4 m)
Working pressure range	Performance rated at: 90 psi (620 kPa)
Compressed air	Air quality according to ISO 8573-1, quality class 2.4.3 The compressed air must be clean and dry.

Service and Repair:

Tool service and repair should be performed by an authorized Apex Tool Group, LLC or Apex Tool Group GmbH & Co. OHG Center. Refer to the last page of this manual for locations.

Disposal:



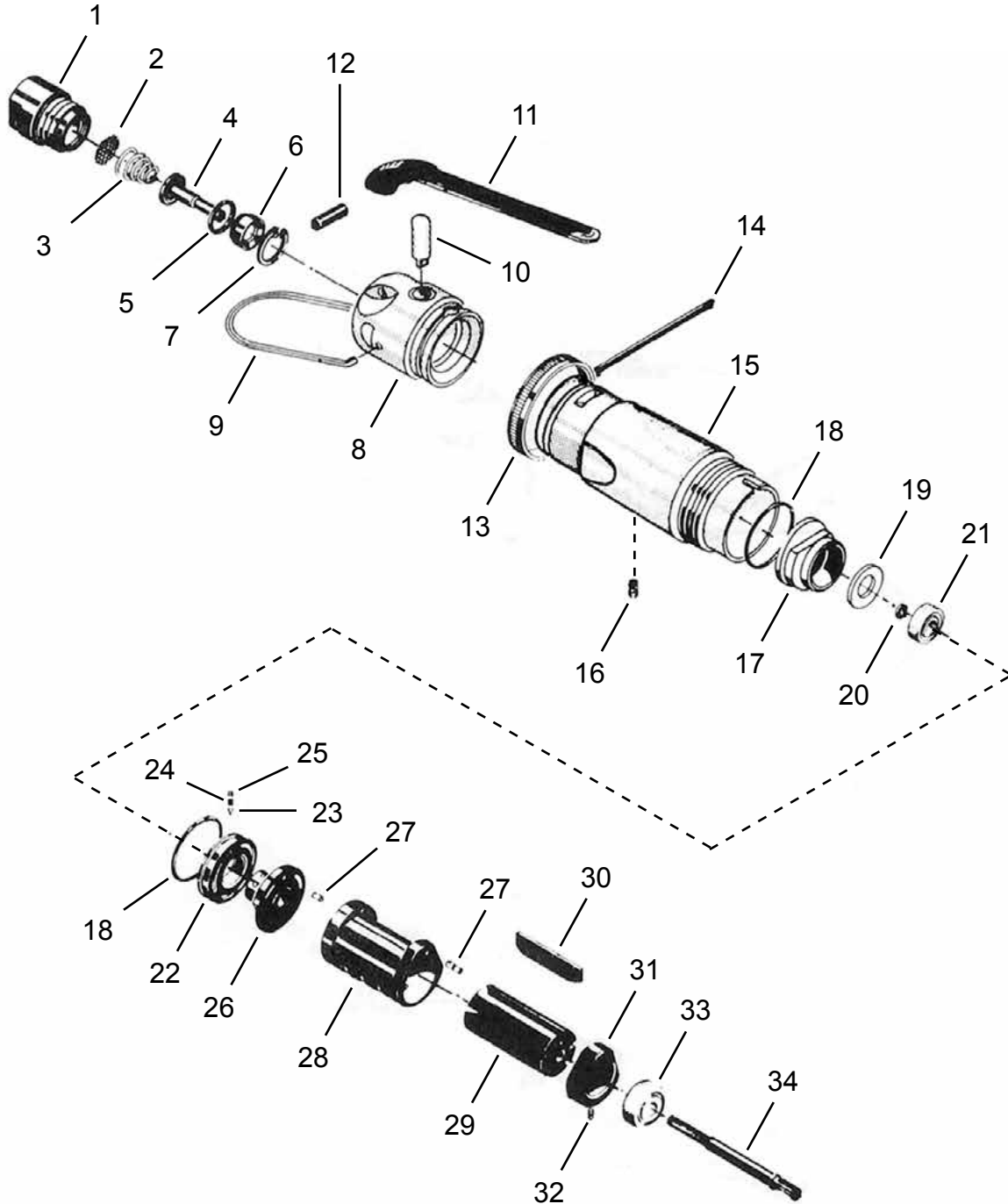
Observe local disposal guidelines for all components of this tool and its packaging.

Copyright Protection:

Apex Tool Group, LLC or Apex Tool Group GmbH & Co. OHG reserves the right to modify, supplement or improve this document or the product without prior notice. This document may not be reproduced in any way, shape or form, in full or parts thereof, or copied to another natural or machine readable language or to a data carrier, whether electronic, mechanical, optical or otherwise without the express permission of Apex Tool Group, LLC or Apex Tool Group GmbH & Co. OHG

Cleco®
Handle and Motor Assembly

“A”



Handle and Motor Assembly

Illustration "A"

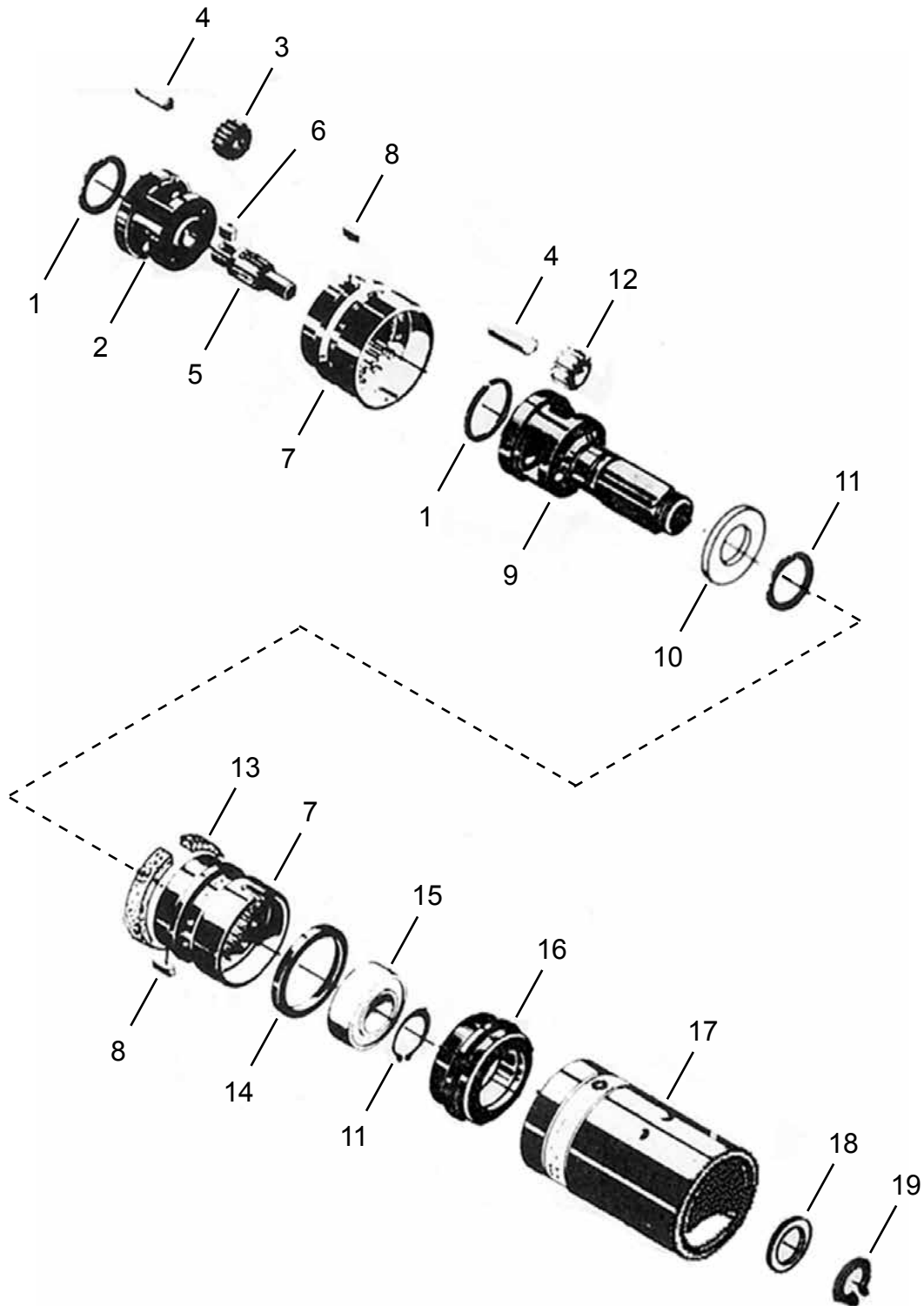
Ref	Number	#	X	EN
				Description
--	AA23751	1		Head Assembly (includes Ref. 1-12)
--	A23711	1		Valve Assembly (includes Ref. 1-7)
1	23711	1	1	Air Inlet Bushing
2	23709	1	3	Air Inlet Screen
3	23753	1	3	Valve Spring
4	23708	1		Valve
5	17741	1	3	O-Ring
6	254840	1		Valve Seat
7	800073	1	2	Retaining Ring
8	A23751	1		Short Head
9	12943	1	2	Suspension Bail
10	23716PT	1		Actuator Rod
11	22374	1	1	Throttle Lever
12	RP101M	1	1	Throttle Lever Pin
13	525172	1		Reversing Ring
14	23747	1		Motor Housing Key
15	527616	1		Motor Housing
16	510716	1	2	Threaded Pin
17	523849	1		End Plate Cap (includes Ref. 18)
18	22598	2	6	O-Ring
19	525145	1		Washer
20	800249	1	2	Retaining Ring
21	10571	1	2	Ball Bearing
22	513328	1		Reversing Valve (includes 1 Ref. 18 and Ref. 23-25)
23	511541	1	3	Button
24	9D6481	1	3	Spring
25	26989	1	3	Plug
26	513327	1		Upper End Plate (includes 1 Ref. 27)
27	E101D	2		Locating Pin
28	A30228	1		Cylinder (includes 1 Ref. 27)
29	23734	1		Rotor
30	10111	5	15	Rotor Blade
31	513165	1		Lower End Plate (includes Ref. 32)
32	RPS106	1		Locating Pin
33	1010770	1	2	Ball Bearing
34	30376PT	1		Long Spindle Gear

(#) Quantity

(X) Recommended Spare Parts (quantity shown based on 1-5 tools in operation)

Cleco® Gearing Assembly

“B”



Cleco®
Gearing Assembly

PL12-1094EN
06/25/2015

Illustration "B"

Ref	Number	#	X	EN
				Description
1	800116	2		Retaining Ring
2	A30249	1		Upper Planetary Gear Cage
3	501115	2	4	Upper Planetary Gear (23T)\
4	23756	5	10	Planetary Gear Pin
5	501118	1		Short Spindle Gear
6	O73	1	3	Short Spindle Gear Key
7	30225PT	2		Planetary Gear Case
8	60887	2	6	Planetary Gear Case Key
9	536331	1		Lower Planetary Gear Cage (includes Ref. 10 and 1 Ref. 11)
10	531244	1		Washer
11	800148	2		Retaining Ring
12	501114	3	6	Lower Planetary Gear (21 T)
13	500377	1	3	Muffler
14	30244PT	1		Spacer
15	23752	1	2	Ball Bearing
16	30345PT	1		Nosepiece
17	30240	1		Lock Sleeve
18	9D4913	1		Washer
19	500742	1	2	Retaining Ring

(#) Quantity

(X) Recommended Spare Parts (quantity shown based on 1-5 tools in operation)

(T) Teeth



POWER TOOLS SALES & SERVICE CENTERS

Please note that all locations may not service all products.

Contact the nearest Apex Tool Group Sales & Service Center for the appropriate facility to handle your service requirements.

NORTH AMERICA | SOUTH AMERICA

Detroit, Michigan

Apex Tool Group
2630 Superior Court
Auburn Hills, MI 48236
Phone: +1 (248) 393-5640
Fax: +1 (248) 391-6295

Lexington, South Carolina

Apex Tool Group
670 Industrial Drive
Lexington, SC 29072
Phone: +1 (800) 845-5629
Phone: +1 (919) 387-0099
Fax: +1 (803) 358-7681

Louisville, Kentucky

Apex Tool Group
1000 Glengarry Drive
Suite 150
Fairdale, KY 40118
Phone: +1 (502) 708-3400
apexpowertools.com/service

Canada

Apex Tool Canada, Ltd.
7631 Bath Road
Mississauga, Ontario L4T 3T1
Canada
Phone: (866) 691-6212
Fax: (905) 673-4400

Mexico

Apex Tool Group
Manufacturing México
S. de R.L. de C.V.
Vialidad El Pueblito #103
Parque Industrial Querétaro
Querétaro, QRO 76220
Mexico
Phone: +52 (442) 211 3800
Fax: +52 (800) 685 5560

Brazil

Apex Tool Group
Ind. Com. Ferram, Ltda.
Av. Liberdade, 4055
Zona Industrial Iporanga
Sorocaba, São Paulo
CEP# 18087-170
Brazil
Phone: +55 15 3238 3820
Fax: +55 15 3238 3938

EUROPE | MIDDLE EAST | AFRICA

England

Apex Tool Group
GmbH & Co. OHG
C/O Spline Gauges
Piccadilly, Tamworth
Staffordshire B78 2ER
United Kingdom
Phone: +44 1827 8727 71
Fax: +44 1827 8741 28

France

Apex Tool Group S.A.S.
25 rue Maurice Chevalier
B.P. 28
77831 Ozoir-La-Ferrière
Cedex, France
Phone: +33 1 64 43 22 00
Fax: +33 1 64 43 17 17

Germany

Apex Tool Group
GmbH & Co. OHG
Industriestraße 1
73463 Westhausen
Germany
Phone: +49 (0) 73 63 81 0
Fax: +49 (0) 73 63 81 222

Hungary

Apex Tool Group
Hungária Kft.
Platánfa u. 2
9027 Győr
Hungary
Phone: +36 96 66 1383
Fax: +36 96 66 1135

ASIA PACIFIC

Australia

Apex Tool Group
519 Nurigong Street, Albury
NSW 2640
Australia
Phone: +61 2 6058 0300

China

Apex Power Tool Trading
(Shanghai) Co., Ltd
Building A8, No. 38
Dongsheng Road
Pudong, Shanghai
China 201201
Phone: +86 21 60880320
Fax: +86 21 60880298

India

Apex Power Tools India
Private Limited
Gala No. 1, Plot No. 5
S. No. 234, 235 & 245
Indialand Global
Industrial Park
Taluka-Mulsi, Phase I
Hinjawadi, Pune 411057
Maharashtra, India
Phone: +91 020 66761111

Japan

Apex Tool Group Japan
Korin-Kaikan 5F,
3-6-23 Shibakoen, Minato-Ku,
Tokyo 105-0011, JAPAN
Phone: +81-3-6450-1840
Fax: +81-3-6450-1841

Korea

Apex Tool Group Korea
#1503, Hibrand Living Bldg.,
215 Yangjae-dong,
Seocho-gu, Seoul 137-924,
Korea
Phone: +82-2-2155-0250
Fax: +82-2-2155-0252

Cleco®

Apex Tool Group, LLC

1000 Lufkin Road
Apex, NC 27539
Phone: +1 (919) 387-0099
Fax: +1 (919) 387-2614
www.apexpowertools.com